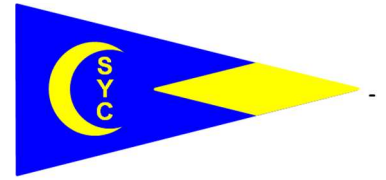


CRESCENT SAIL YACHT CLUB



86th ANNUAL REGATTA

SATURDAY, AUGUST 24, 2019

FLAG OFFICERS

Commodore
Vice Commodore
Rear Commodore
Fleet Captain

Champ Glover
Dave Simon
Tim Pruss
P/C Ken Tanner

REGATTA COMMITTEE

V. Com. Dave Simon

Jim Rusnack
Dale Benedict
Bob and Rosemary Brasie
Stu and Mary Dees
John Broman
Trish Wood
Doug and Cara Scheibner
Com. Kevin and Allison Sherry
Com. Tom and Karen Srigley
Com. Terry and Marilyn Stocker
Richard and Judy Thoma
Com. Charlie Todd and Barb Schmid
Mike O'Reilly

Nancy Piech
Lynn Rask
Com. Loretta Rehe
Jane Rupp
Dave and Jan Gaden
Com. Dick Green and Carol Lynn
Jim and MaryAnn Hull
Com. Ron and Kathy Jacksy
Diane Ohman
Dennis Kwasny
Judy March
Gary and Gloria Barker
Sue Lieder

CSYC RACE MANAGEMENT COMMITTEE

Regatta Chairperson
Club Race Officer

P/C Jim Lieder
V. Com. Dave Simon

D & E COURSE

Principal Race Officer
Team Leader

Com. Edwin C. Theisen, Jr. DYC
George Heitmanis BYC/DYC

F COURSE

Principal Race Officer
Team Leader

Mr. George Griswold
Com. Anne Gooch TRYC

DRYA RACE MANAGEMENT COMMITTEE

Matt Bounds NCYC (Senior Protest Judge)

Michele Davis

Mark Baker

Doug Gentry

Judy Morlan

William McIntyre DYC

Jack Harrington

Com David Spiers EBC/DRYA

Com Gordon Morlan

Com Judy Francino SS/GPSC

Com. Edwin Theisen, Jr. DYC

Com. Michael J. McGuire LSSC/GLYC

Com. Alan Minsterman DYC/BYC

Com Diane Templeton LSSC

Com. Frank Stellingwerf EBC

DRYA Race Management Committee participants and other guests of the Race Committee are requested to board Committee Boats by 0830 hours.

HONORARY JUDGES

The 2019 DRYA Member Commodores

Chairman -- Com. Champ Glover CSYC

Com. Doug Post AYC

Com. Bill Wayland DBC

Com. Celeste Belainger DSC

Com. Dan Dunlop EBC

Com. Gary Dust GIYC

Com. Van Hauswith GPC

Com. Michael Sherwood GPSC

Com. Com. Tanagra Weaver GSCD

Com. Chip Gossman NCYC

Com. Karl Aavik PYC

Com. Gretchen Gallagher SS

Com. Tim Down SYC

Com. Com. Frank Dolan WYC

Com. Sandy Fullerton BYC

Com. Chris Behler DRYA

Com. Allen Pugh DYC

Com. Keith Walker FYC

Com. Larry Delargy GLYC

Com. Ric Schmidt GPFBC

Com. Ilja Vreeken GPYC

Com. Danielle Templeton LSSC

Com. Jim Hodson NSSC

Com. Reid Stromberg PHYC

Com. Tim Aseltine SPSC

Com. Paul Janowiecki TYC

COMMITTEE BOATS

Chairman – Bob Brasie

Easterly

CSYC

F Course Control Boat

Getaway Car

Com. Dennis Cotter GPSC and
Tristan Cotter

F Course Patrol Boat

Upbeat

Dave and Jan Gaden

D/E Course Stake Boat

Jänta

John Broman

D/E Course Stake Boat

Lucky

Com, Barney Mathie GLYC and
Jack Harrington

D/E Course Patrol Boat

Sayonara

Com. Charlie Todd and Barb Schmid

D/E Course Stake Boat

RACE FESTIVITIES

PARKING

Parking on CSYC property is restricted to CSYC members, DRYA race officials and visiting flag officers. Crews and non-CSYC members should park on Lakeshore Drive.

BEFORE THE REGATTA

A limited number of overnight moorings will be available in our harbor for Friday night **by reservation only**. For a reservation call our Fleet Captain, Ken Tanner at (586) 854-2607.

Rafting in our harbors on the morning of the race is also available from 0700 hours on a first come, first served basis.

Mooring will be provided subject to the following conditions:

1. Owners assume all responsibility for loss or damage to, or caused by, their boats, and
2. All boats must be manned by 0900 hours so that boats may be freed in succession without delay.

DURING AND AFTER THE REGATTA

We will have libations and food open to all competitors, CSYC members, DRYA race committee and guests. No reservations are required, with basic barbecue burgers, hot dogs, and bratwursts on a cash basis at very low cost. There will be a kayak parade at noon and lawn games and music throughout the day. Please encourage non-sailing members of your family and other interested persons to join us on our new porch and balcony for play-by-play announcing of the starts and finishes.

AWARDS will be presented approximately two hours after the last finish of each course.

TROPHIES

COM. HERBERT J. MAINWARING TROPHY

Awarded to the first-place, overall Division 1 Boat.

RICHARD L. BLANCHARD MEMORIAL TROPHY

Awarded to the CSYC skipper placing best in the largest fleet of one-design boats under 21 feet.

JAMES POWELL MEMORIAL TROPHY

Awarded to the first-place boat racing in the Crescent Sloop class.

MAYNARD HEATH MEMORIAL TROPHY

Awarded to the first-place boat racing in the Star Class.

SAILING INSTRUCTIONS - ALL COURSES

The Organizing Authority for this regatta is CSYC. The 2019 DRYA Notice of Race (“NOR”) and Standard Sailing Instructions (“SI”) for “A” and “C” Courses are adopted except as modified below. References in the DRYA SI to its "A" Course shall apply to the CSYC "D" and "E" Courses. References in the DRYA SI to its "C" Course shall apply to the CSYC "F" Course. DRYA Olympic Course specific instructions and the specific Sailing Instructions for “A” Course Only are deleted.

Copies of the CSYC SI are available at CSYC. Copies of the CSYC SI and the DRYA SI are available from DRYA and online at <http://drya.org/race2019/Race%20Sch+Info19.html>

Detroit Regional Yacht - Racing Association
23915 Jefferson, Suite 1, St. Clair Shores, MI 48080
(586) 778-1000

If you have any questions regarding the SI or the rest of the festivities please contact Com. Jim Lieder at jlieder536@gmail.com or 313-330-7533

ELIGIBILITY: This Regatta is open to those registered for the 2019 DRYA Counter Series and to all other DRYA and non DRYA Club members boats wanting to race in any of the Classes except Delta.

REGISTRATION: For those boats NOT registered for the DRYA Counter Series for 2019 you are a guest boat and must be pre-registered by 2359 hours Tuesday, August 20, 2019 (“the deadline”). Use the online form at: www.bit.ly/RegisterDRYArace. Registration is free.

If you are registered for the DRYA Counter Series you are automatically registered but if you wish to **change classes** for this race only (i.e. race in CSYC JAM), you must also register online at www.bit.ly/RegisterDRYArace by the deadline.

RATINGS: If a boat wishing to race on either D or E Course does not have a DRYA rating (Standard spinnaker certificate or PJAM handicap) contact the DRYA office **as soon as possible** and at least 5 days prior to race day to obtain a certificate. **Exception:** Boats wishing to sail in a One Design class on either D or E course do not require a certificate and will be assigned the One Design rating used for that class. The classes and ratings are E course: Beneteau 36.7 (78) and J-120 (48); and D course: Cal 25 (225), Express 27 (138), C&C 35 (129) and S2 7.9 OB (168).

Boats racing on the F Course do not require a DRYA PHRF certificate.

If you are racing in CSYC JAM or DBL JAM you must have a rating that has been assigned by DRYA. If you don't have one you can get a PJAM rating via the DRYA web site for \$10 and you should **apply as soon as possible** at least 5 days prior to race day at: <http://drya.org/Forms/2019/2019%20BLANK%20v3%20-%20PJAM.pdf> . **State on the form** that you need the rating for the CSYC race. **YOU MUST ALSO REGISTER** by the deadline at www.bit.ly/RegisterDRYArace

If you are racing in DBL SPIN you must have a Spinnaker rating that has been assigned by DRYA. If you don't have one you can get one via the DRYA web site for \$35 and you should **apply as soon as possible** at least 5 days prior to race day at: <http://drya.org/Forms/2019/2019%20BLANK%20v3%20-%20PHRF.pdf> . Email it to: barbseskiDRYA@gmail.com . **State on the form** that you need the rating for the CSYC race. **YOU MUST ALSO REGISTER** by the deadline at www.bit.ly/RegisterDRYArace .

If you are a DRYA member the PJAM rating certificate is free and adding the Spinnaker rating is \$30.

If you have rating questions, email C. Drummond at cdrummol@ford.com.

AGREEMENT TO ASSUME RISK: In consideration of being permitted to enter this regatta, and being fully knowledgeable of the risks of sailing as a competitive sport, all contestants, crew members and guests aboard voluntarily assume all risks associated with participating in this regatta. All contestants, crew members, and guests aboard a competing boat shall assure that the boat has all the required United States Coast Guard equipment, as well as other safety equipment aboard the boat, and that the boat shall be seaworthy in hull, rig and gear, and shall be competently manned. All contestants, crew and guests aboard acknowledge and agree that neither Crescent Sail Yacht Club, nor its officers, members, the Race Committee, employees or agents assume or accept any liability for property damage to any boat or personal injury to a skipper, crew member or guest suffered while participating in this race, including pre-race and post-race activities. The skipper acknowledges and agrees that the decision to start or continue the race is solely the responsibility of the skipper. This paragraph is in addition to the Agreement to Assume Risk in the DRYA Sailing Instructions.

PROTESTS: A boat electing to protest shall follow the procedure described in the DRYA Sailing Instructions.

NOTICES TO COMPETITORS: Notices will be posted on the official notice board located in the CSYC clubhouse.

CHANGES TO THE SAILING INSTRUCTIONS: Any change to the sailing instructions will be posted by 0900 hours on the day it will take effect, except that any change to the schedule of races will be posted by 2000 hours on the day before it will take effect.

INSTRUCTIONS FOR BOTH D & E COURSES

D & E COURSE STARTING TIMES

ATTENTION SIGNAL (1 Minute before Warning)
FIRST WARNING SIGNAL 1030 hours

Start # Class	Rating	Class and Start Flag
DIVISION I		
E COURSE		
PRF ASM (60-300), BENETEAU 36.7	-	E and K
PRF 3	100-150	#1
PRF 2	60 – 99	F
J-120	-	#8
PRF 1	59 & Lower	#7
GL 70	-	#9
DIVISION II		
D COURSE		
C & C 35	-	#0
DBL JAM / DBL SPIN	-	G and F
CSYC JAM	-	CSYC Burgee
PRF 4	151 and higher	2 nd Substitute
DELTA	-	D Logo
CAL 25	-	Class Logo
S2 7.9 OB	-	Class Logo
EXPRESS 27	-	Class Logo
MULTI-HULL	-	#6

TIME LIMIT: On the E Course, the time limit for each class will be eight hours after the start time for that class. In the event the E Course is shortened before the start, as described herein, the time limit for each class will be six hours

On the D Course, the time limit for each class will be six hours after the start time for that class

All boats on both courses finishing after 1900 hours are instructed to take their own finishing time and report it to the CSYC Race Committee within one hour after finishing. When possible record the boat ahead and boat astern.

STARTING AND FINISHING LINES: The starting area will be located off CSYC. The starting line will be between a green flag or pyramid and a RC Flag on the Race Committee Station located on the CSYC outer seawall.

The finish line will be between a green flag or pyramid and the RC flag on the Race Committee Station. Boats shall finish downstream, leaving the green flag or pyramid to port.

A limit mark (red/green horizontal bands) may be set near the inboard end (seawall end) of the starting/finishing line. If a boat touches this mark or passes between this mark and the seawall that boat breaks Racing Rules of Sailing (“RRS”) 31.

OVER EARLY RACE COMMITTEE BOAT: A Race Committee boat may be stationed at the outboard (starboard) end of the starting line to assist the Race Committee in identifying boats over early. DRYA Sailing Instructions Paragraph 10, Limit Marks, applies to the Race Committee vessel.

SHORTENED COURSE PRIOR TO THE START- E COURSE ONLY: If the race committee displays Code Flag “T” from the Race Committee Station prior to the start boats shall sail the D course.

SHORTENED COURSE AFTER THE START: If Code Flag “J” is displayed from a Race Committee boat near a rounding mark then boats shall round the course mark near the Race Committee boat and sail direct to the finish line. The Race Committee vessel displaying the visual signal will attempt by the use of a sound signal to alert the boats of the shortened course as the boats approach. This changes RRS 32 as it pertains to shortening the course. If the race is shortened, the course distance used for handicapping will be adjusted accordingly.

WATER INTAKE: A buoy marking the water intake obstruction may be placed between the Grosse Pointe Farms Pier and CSYC for safety information purposes. This buoy is not a mark of the D or E courses.

CLASS FLAGS: Competitors in the Cal 25, S2 7.9 and Express 27 starts are not required to fly a class flag.

RADIO MONITORING: Boats are requested to monitor **VHF 72** from 0930 hours until after finishing.

NO SIGNALS MADE ASHORE: No signals made from the Race Committee Station located on the CSYC outer seawall shall be considered signals made ashore.

E COURSE INSTRUCTIONS

A shape or flag will be displayed from the Race Committee Station as follows:

Red shape or flag: leave marks to Port.
Green shape or flag: leave marks to Starboard.

Boats sailing the E Course shall sail the following course after the start:

RED SHAPE / FLAG

	To Mark	Heading	Distance
Leg 1	C	057	6.0 nm
Leg 2	B	339	3.6 nm
Leg 3	Finish	210	7.6 nm

GREEN SHAPE / FLAG

	To Mark	Heading	Distance
Leg 1	B	030	7.6 nm
Leg 2	C	159	3.6 nm
Leg 3	Finish	237	6.0 nm

All courses are magnetic and all distances are nautical miles. 17.2 nautical miles will be used for handicapping.

D COURSE INSTRUCTIONS

A shape or flag will be displayed from the Race Committee Station as follows:

Red shape or flag: leave marks to Port.
Green shape or flag: leave marks to Starboard.

Boats sailing the D Course shall sail the following course after the start:

RED SHAPE / FLAG

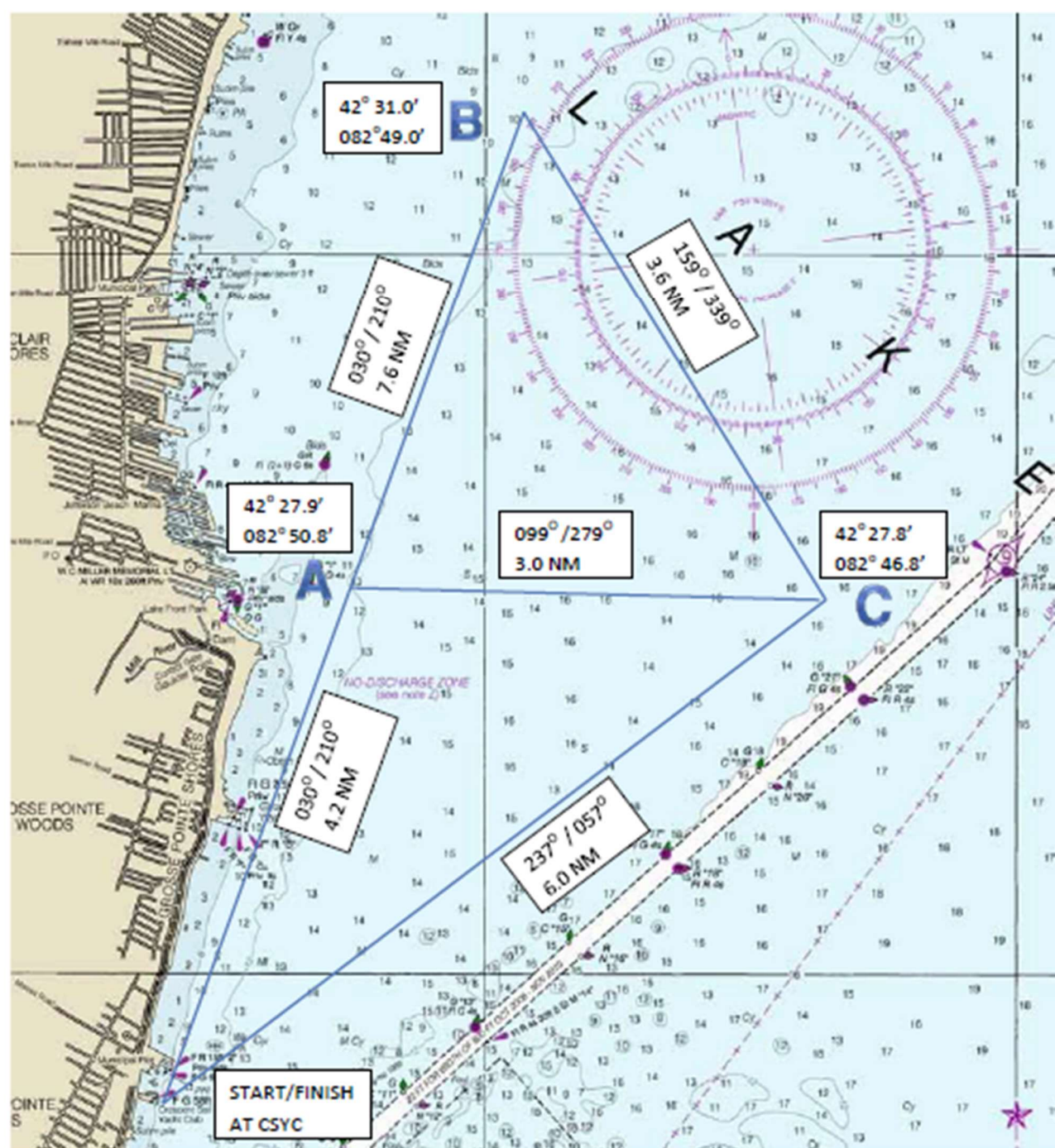
	To Mark	Heading	Distance
Leg 1	C	057	6.0 nm
Leg 2	A	279	3.0 nm
Leg 3	Finish	210	4.2 nm

GREEN SHAPE / FLAG

	To Mark	Heading	Distance
Leg 1	A	030	4.2 nm
Leg 2	C	099	3.0 nm
Leg 3	Finish	237	6.0 nm

All courses are magnetic and all distances are nautical miles. 13.2 nautical miles will be used for handicapping.

CSYC REGATTA D AND E COURSES



This image is NOT to be used for navigation and is not created to any scale.

For handicapping purposes:

"E" Course is 17.2 NM

"D" Course is 13.2 NM

F COURSE INSTRUCTIONS

F COURSE STARTING TIMES

ATTENTION SIGNAL (1 Minute before Warning)
FIRST WARNING SIGNAL 1030 hours

Start # Class	Course	Start Flag
Multi-hull	Long Course	Class Logo
Star	Short Course	Class Logo
J-70	Short Course	Class Logo
Thistle	Short Course	Class Logo
Lightning	Short Course	Class Logo
Crescent	Short Course	Class Logo
Cal 20	Short Course	Class Logo
Flying Scot	Short Course	Class Logo
Snipe/Other	Short Course	Class Logo

COURSE LOCATION

The starting area shall be located in the area between CSYC and the Grosse Pointe Club, west of the shipping channel. All boats are instructed to locate the main Race Committee Boat which will display Code Flag "L" until it is on station.

COURSE

The course will be a windward-leeward course with a total of four legs. Refer to sailing instruction diagram for F Course below. Reference in the diagram to "C" Course shall mean "F" Course. All courses are magnetic and all distances are nautical miles and approximate.

SECOND RACE

Conditions permitting, the Race Committee may have two races. Code Pennant "#2" displayed on the Finishing Line Race Control Boat means that the Race Committee has scheduled a second race. When one or more class flags are displayed below the Code Pennant, the second race is only for the classes whose class flags are displayed.

The Race Committee will attempt to finish the majority of boats in the last race by 1630 hours. When two races are sailed, they shall be scored as prescribed in the DRYA Handbook.

RADIO MONITORING

The "F" Course Race Committee will monitor **VHF 71**.

SIGNALS MADE ASHORE (F Course ONLY)

Signals made ashore will be displayed in the vicinity of the Henry B. Joy Sailing Center at CSYC. Display of flag "D" ashore with two sound signals means "Races not started are *postponed*." The warning signal will be made not less than one hour after flag "D" is lowered with one sound signal. This changes Race Signals.

CSYC F COURSE DIAGRAMS

